

**Washington Teachers' Union**  
**Local 6, American Federation of Teachers**  
**AFL-CIO**

---



***Representative Assembly &  
General Membership Meeting***

March 8, 2016, 4:30pm – 6:30pm

McKinley Technology High School

***Elizabeth A. Davis, President***

# Combined Membership Meeting

## March 8, 2016

---

- Call to Order**
  - Minutes Unavailable from February 2016
  - Review/Approval of Today's Agenda
  - Credential Report



# Combined Membership Meeting

## March 8, 2016

---

### □ Special Guest Presentations

- WTU Community Partnership Project and Delta Kappa Gamma Shoe Drive
  - ***Audrienne Womack, Alpha Chapter Non-Dues/Shoe Drive Chair***
- 2022 Campaign for School Modernization Petition
  - ***Peter MacPherson, Community Activist***



# Combined Membership Meeting

## March 8, 2016

---

### Committee Reports

#### Elections Committee Report

- 2016 Nominations and Elections Notice
- List of WTU Positions Open for Election
- 2016 Nominating Petition Form
- Election Timeline



# Combined Membership Meeting

## March 8, 2016

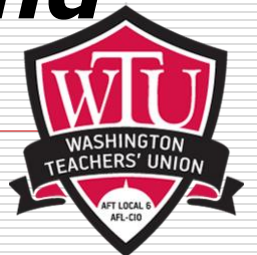
---

### ■ **COPE (Committee on Political Education)**

□ Draft Endorsement Process for DC Primary Elections, ***Laura Fuchs (HD Woodson), Chair***

### ■ **TAS/CP/CSC Task Force**

□ In Need of Reform Presentation and IMPACT Cycle I Survey Results, ***Duanna Petrus (Noyes) and John Dixon (Oyster-Adams), Co-chairs***



# Combined Membership Meeting

## March 8, 2016

---

### □ President's Report

□ Shared Vision 2016 Conference Recap

■ *Over **500 attendees** in last three years!*

□ WTU **WINS** DC Labor Organizing Award

■ *40+ WTU Teacher Leaders, Building Reps. & Staff to Attend Evening with Labor this Saturday@Washington Hilton Hotel*

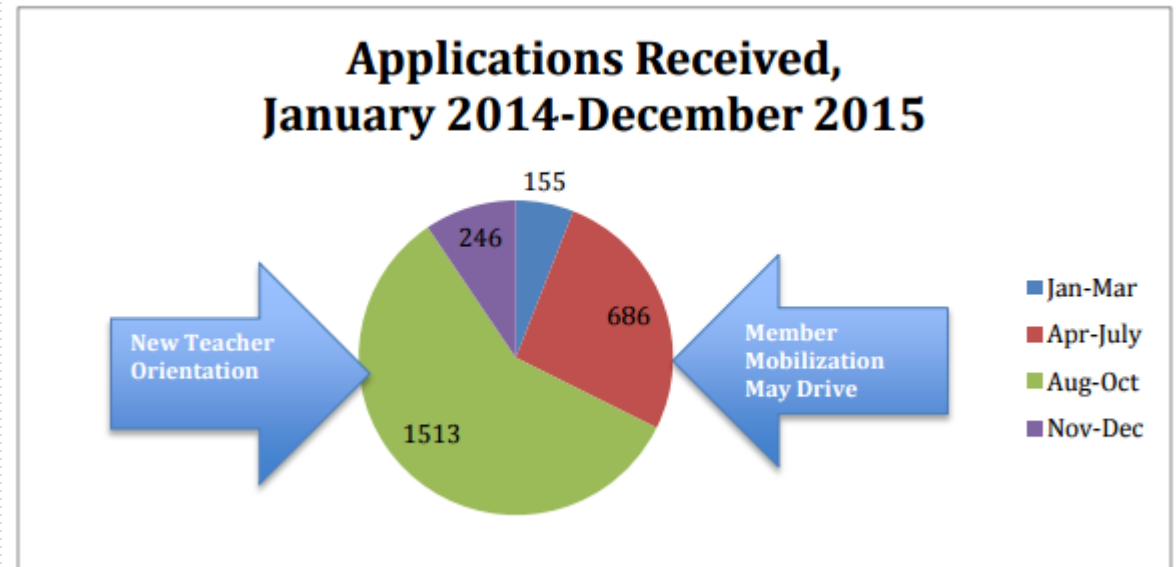


# Combined Membership Meeting

## March 8, 2016

### President Davis' Report on Membership Applications Received January 2014 - December 2015 (as of 12/31/15)

Month	# of Applications Received
January - March 2014	70
April - June	450
July - September	695
October - December 2014	311
January - March 2015	85
April - June	225
July - September	736
October - December 2015	28
<b>TOTAL</b>	<b>2600</b>



# Combined Membership Meeting

## March 8, 2016

---

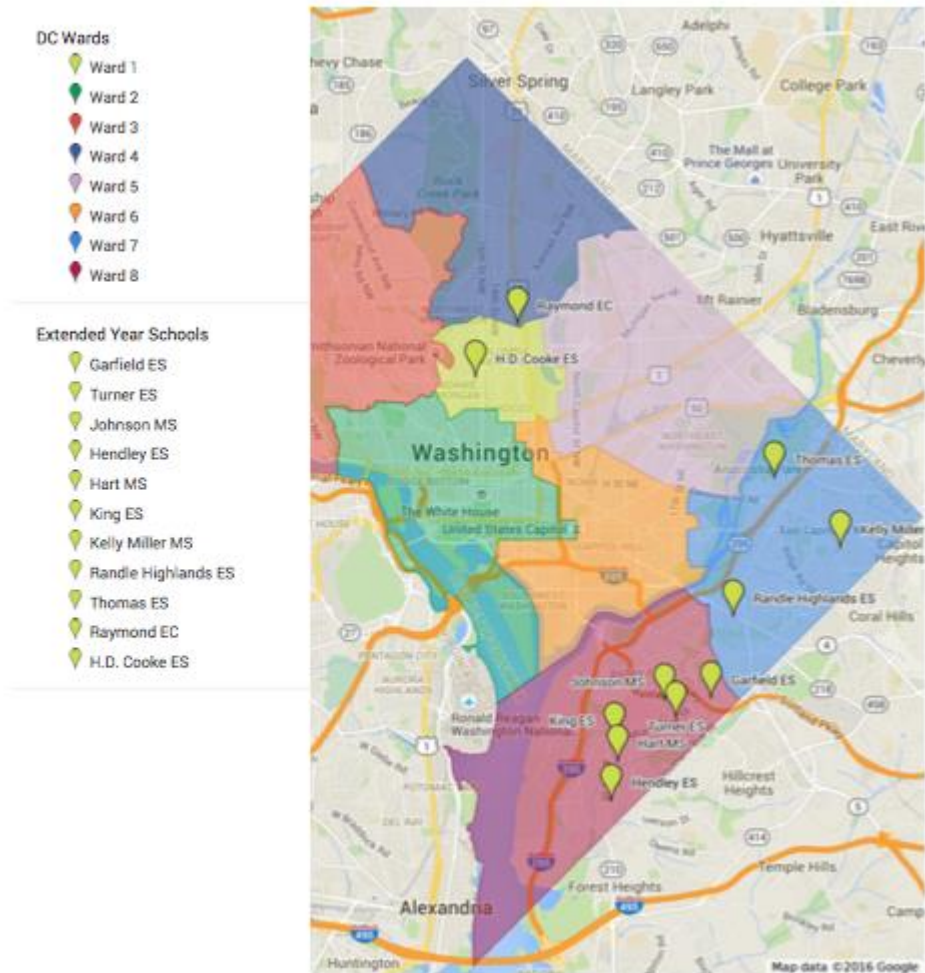
### □ President's Report Continued

- Contract Update and Recap of Meetings Held February 10-March 2, 2016
  - **JUST IN:** DCPS agrees to now meet twice a week, Wednesdays and Fridays; Next meeting tomorrow
- Legal Updates and Grievances
  - VEBA claim by Nathan Saunders **dismissed** by the Department of Labor on 2/22/16





# Extended Year Class Action Grievance Filed on February 22, 2016



## Affected schools:

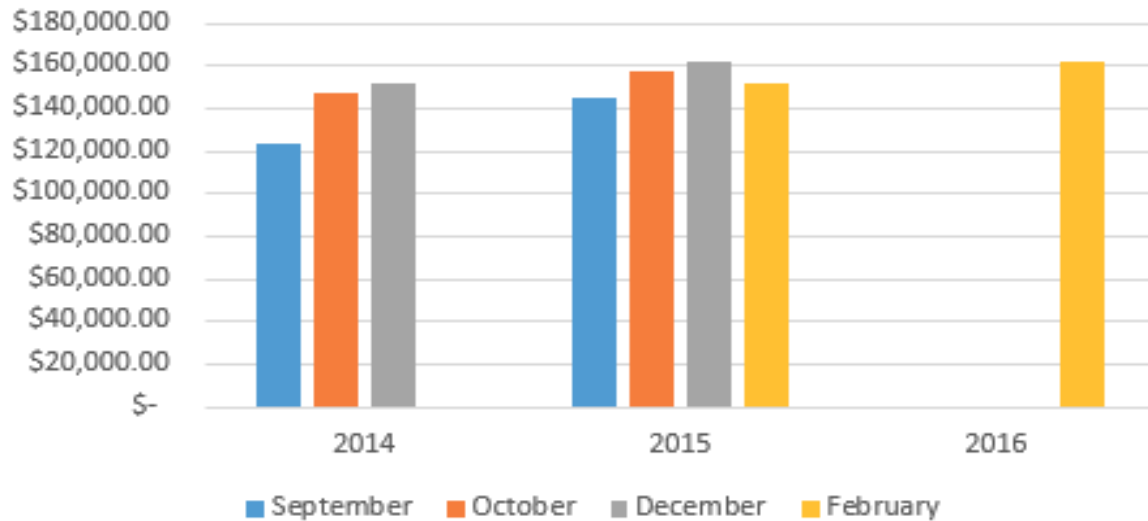
- Garfield ES
- Hart MS
- H. D. Cooke ES
- Hendley ES
- Kelly Miller MS
- King ES
- Johnson MS
- Randle Highlands ES
- Raymond EC\* (Existing)
- Thomas ES
- Turner ES

<https://www.google.com/maps/d/edit?mid=zw6XuZJu0rsg.kK6FmTLMhceo&usp=sharing>

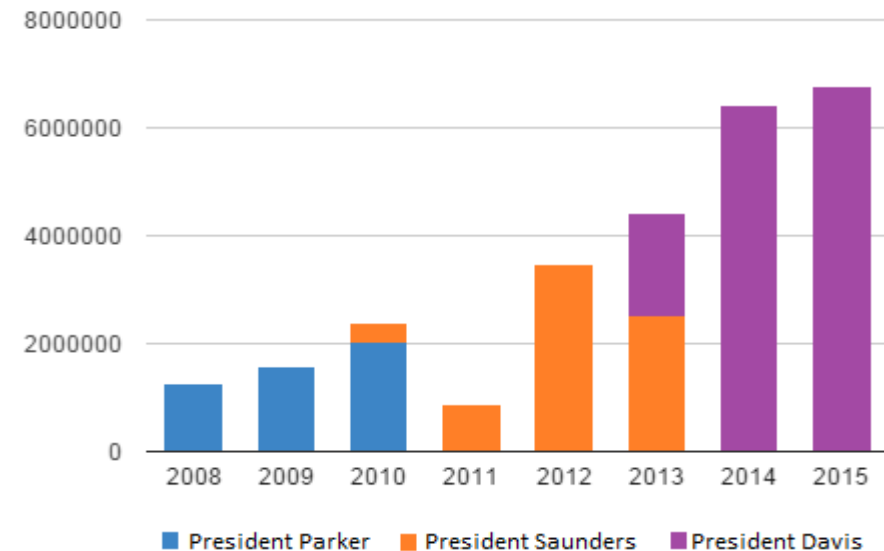


# President's Report on WTU Finances

Financial Growth in Union Dues



Total Assets 2008-2015



***The financial state of the WTU continues to IMPROVE!!***



# Combined Membership Meeting

## March 8, 2016

---

### President's Report Continued

- Declaration of Intent Not to Return Application, **Deadline is April 1<sup>st</sup> @5pm**
- Update on Aspen
- Update on LEAP
- Teacher Annuity Update, **Deadline is March 31<sup>st</sup>** for Benefit Year 2014



# Combined Membership Meeting

## March 8, 2016

---

- Teaching and Learning Conference 2016
  - WTU/AFT **granted 85 scholarships** to this year's conference to occur March 11-12<sup>th</sup>
- Next **Regional Meetings**, March 22 @4:30
  - Deal- Meet Devin Nixon
  - Moore – Meet Rejil Solis
  - Simon – Meet Charles Moore
  - Whittier – Meet Candi Peterson



# Combined Membership Meeting

## March 8 , 2016

---

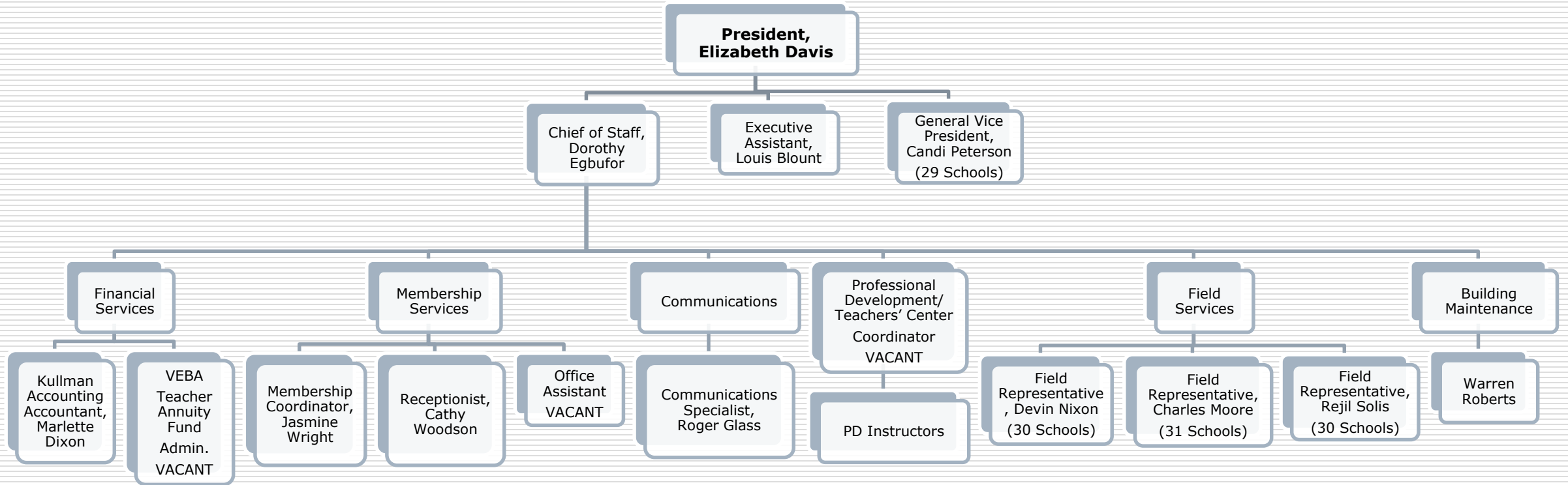
□ New WTU Member Education Series

***"Getting to Know and Understand the Roles and Responsibilities of WTU Professional Staff"***



# WTU Organizational Chart

## March 8, 2016



**Professional Staff Job Descriptions Available in Meeting Packet**  
**Descriptions for WTU Officers Available in WTU Constitution**



# Questions/Concerns/Ideas?? We're Here to Support You!



---

Washington Teachers' Union  
1239 Pennsylvania Avenue, SE, 20011  
202-517-1477 (main)  
202-517-0673 (fax)

[dialogue@wtulocal6.net](mailto:dialogue@wtulocal6.net)

Contact Your Field Rep: [www.wtulocal6.org](http://www.wtulocal6.org)

Follow us on Twitter: @WTUTEACHER

Like us on Facebook: Washington Teachers' Union

**Next Rep. Meeting: April 12<sup>th</sup>**

---



***One Union, One Voice!  
Solidarity Forever!***

*Thanks for your support and  
commitment!*

*Elizabeth A. Davis, President*